



Development Kit for Velox

Platform development kit with hardware and software

Contents

- Imsys Developer: Complete IDE for Windows
- USB Trace Adapter (powered from computer, can also power target system)

Target system unit*:

Standard plastic enclosure with integrated DIN rail clip
Main board 64x80 mm includes:

- 10/100 Mb/s Ethernet, optionally dual Ethernet with on-board switch (e.g. for daisy-chaining)
- 2 configurable serial ports RS232/422/485 up to 921.6 kbit/s
- Micro SD card, Buzzer, 5 LEDs with light guides
- Expansion connector for 64x56 mm option board for additional interfaces, e.g.
 - additional serial port
 - analog, digital, and relay I/O with screw terminals
 - LCD graphics display or camera
 - Wireless
- 12-48V input for use without trace adapter

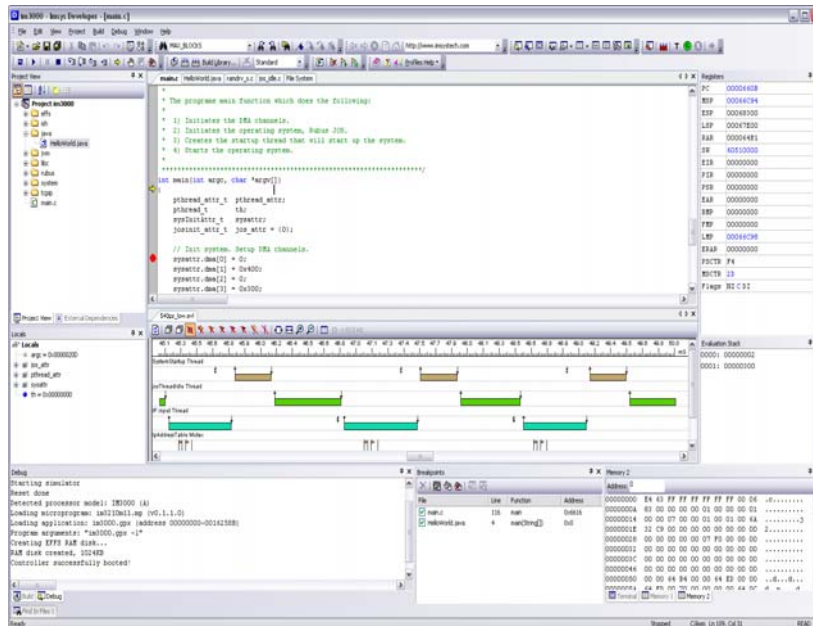


Firmware for target system:

- Complete environment for user application
- J2ME/CLDC, Rubus RTOS, fail-safe flash file system, access to all ten 8-pin GPIO ports, three serial channels, Ethernet switch and expansion board
 - TCP, UDP, IPv4, ICMP, IGMP, ARP, HTTP, CHAP, PAP, DHCP, NTP, SMTP, Telnet, FTP, PPP
 - Web server

Imsys Developer:

Complete, Windows-based environment for the development of user application software, with debug support for Java, C, and assembler.



* The target system unit will also be offered in an industrialized version, which can be delivered with a metal front panel suitable for customer specific graphic overlay